



The Rockhounder

March 2017

The purpose of the Gem, Lapidary, and Mineral Society of Montgomery County MD, Inc. is "to increase knowledge and popular interest in earth sciences, geology, mineralogy, paleontology, lapidary arts, and related subjects."

NOTE: Please send any submissions for the April issue of The Rockhounder to Editor Olivia Luzier at editor@glmsmc.com by Monday, March 27, 2017.

Regular Meeting Announcements

Gary Leaman, Vice President

March Speaker Information:

March Speaker: Members of the Central Maryland Gold Prospectors

For those members that visited last year's Annual Gem-Mineral-Fossil Show, you might remember the Central Maryland Gold Prospectors. They will be demonstrating gold panning at our meeting and at our 53rd Annual Gem-Mineral-Fossil Show this year. If you have never panned before, you will be able to learn how to pan for gold and improve your panning skills.

"Members of the Central Maryland Gold Prospectors will be discussing the Appalachian Gold Belt and gold occurrences in Maryland and Virginia. Along with numerous displays, they will have gold panning demonstrations and everyone can try their hand at 'swirling the pan.' They will relate their many prospecting experiences, introduce us to their Organization, and answer questions about gold prospecting in the area."

From pervious conversations with their Vice President Scott Sprague, there will be a table of gold panning items that they sell and pamphlets on gold panning.

I have provided a few links below for you:

[Central Maryland Chapter](#) of the
[Gold Prospectors Association of America](#)

Next Regular Meeting:

Date: Monday, March 13, 2017 **Time:** 7:30 PM

Place: Rockville Senior Center,
1150 Carnation Drive
Rockville, MD

Next Board of Directors Meeting:

There will be no of Board of Directors for March, in lieu of our annual show.

Inside this issue:

Item	Page
Meeting Announcements	1
President's Message	2
Regular Meeting Minutes	3
BOD Meeting Minutes	4
FRA Meeting Minutes, Show Table	5
Our Show (Reminders)	6
Pictures from Feb. 13 Meeting	7
Show Table from Feb. 13 Meeting	9
Help Wanted for Show	10
Upcoming Events, Boy Scout Picture	11
Pictures from Jan. 7 JMU Trip	12
Selenium in the News	14
Websites of Interest	15
Upcoming Shows	16



President's Message

Jonathan G. Harris

It is March—Spring time and show month. Thank you to all of the members who have agreed to volunteer time at the show. Your commitment enables us to plan the activities that make our show special. Thanks in advance to those who will sign up in the next week to volunteer for the show so that we have enough workers to provide our community with a most enriching experience.

I must commend Holly McNeil and Dave Tiktinsky for their tremendous amount of work behind the scenes to organize the show. Their work for this year's show began around the time the prior year's show ended. This includes less visible activities such as planning out the arrangement of dealer tables and exhibits, managing the dealer relationship and contracts, soliciting demonstrators and exhibitors, organizing the displays, working with the fairgrounds and contractors, and many more activities. All of this requires great customer relationships, skillful organizing, and great attention to detail to make sure that nothing falls through the cracks.

Another show hero is our Property Manager Joel Rosen. While we normally experience his charm at the show table and raffle time, he plays a less visible role in managing both our physical assets and the mechanics of show set-up. Among the first and last tasks of the show is arranging many hidden feet of electrical cords to light display cases downstairs and dealer displays upstairs, power cabochon-making machines, and much more. Where are the cases, machines, club exhibits, cords, and other show supplies stored? They are in two trailers we own. Joel knows when to reseal the roof, lubricate the axles, how much weight they can hold, and much more. He does much of the maintenance and arranges towing and parking and, of course, loading and unloading.

Please circulate copies of our show flyer and coupon to friends and colleagues and neighborhood mailing lists. For email invitations, include the link to our discount coupon: http://www.glmsmc.com/images/GLMSMC_ShowFlier2017.pdf.

Attendees can use the "silicon version" of the flyer—show the image on their smart phone—to get the discount. We will have a great assortment of demonstrators, cabochon-making lessons, our world class fluorescent mineral displays, and over 30 first rate exhibits.

Do you want to see gold panning in action? Come to our March meeting and then to the show to see the Gold Prospectors Association of America's hands on demonstration.

Finally, if you want great deals on either lapidary equipment or material, save the date **Saturday, May 6** on your calendar, as we will be auctioning off a range of lapidary equipment and excellent material—agates, jade, and petrified wood.

We also need volunteers to help in preparing and executing the auction. Preparation includes rinsing the dust off the material and separating it into lots. On the day of the auction, we need help with the set-up and execution of the auction. A likely date for some of the preparation will be **Saturday, March 25**. Please contact Dave Tiktinsky, dht444@yahoo.com, to volunteer.

Happy prospecting,
Jonathan



GLMSMC Regular Meeting Minutes for February 13, 2017

Jeff Cessna

The February 13, 2017 meeting was called to order by President Jonathan Harris at 7:42 pm. There were approximately 47 people in attendance. It was M/S/P to approve the minutes of the January 9, 2017 regular meeting. It was M/S/P to approve the minutes of the January 16, 2017 Board meeting minutes.

FRA: Mark Dahlman announced badges earned by the MOCKS in Collecting and other areas.

Show: Holly McNeil (sans name badge) requested members to sign up to volunteer at the show and to exhibit. There were 30 exhibit applications. 40 exhibits are needed. Holly announced that long-time exhibitor Joe Murter passed away. Help is needed in the junior area on Sundays and the shop on both days. Jonathan Harris noted he could teach anyone interested in working in the shop. If anyone has a place to hang a poster, please see Holly to pick one up. A picture can be used as a coupon. Flyers are also available. Doag Baum mentioned that the show was named in the Top 100 Shows in America by the Delaware Mineralogical Society.

Treasurer: Tom Dushel reported that everything is up-to-date.

President: Jonathan Harris announced a silent auction of equipment and specimens. Jonathan announced that the upcoming Board of Directors meeting will take place at his home, rather than the usual venue.

Program: Gary Leaman introduced the speaker for the evening, our own Chris Luzier. Chris presented "The Fascination of Fluorescence." The main content of the presentation was the photos, taken by the speaker, of a multitude of specimens originating from the famous Franklin and Sterling Hill Zinc deposits. Along the way, the basics of ultraviolet light, fluorescence, phosphorescence, collecting, what to look for in daylight were covered, and the minerology of the New Jersey deposits were covered. Pictures covered the spectrum from "red and green" to Margarosanite and Parker Shaft pieces. Chris also noted that information that comes with specimens is important, especially location in the mine, if available. Chris graciously responded to many audience questions during and after the talk. The talk was followed by UV display of a collection of specimens that could be viewed during the break. Thanks, Chris.

Joel Rosen administered the door prizes.

Adjournment: It was M/S/P to adjourn the meeting at 9:53 PM.

Jeff Cessna, Secretary.



GLMSMC Board Meeting Minutes for February 20, 2017

Chris Luzier filling in for Jeff Cessna

The meeting was called to order at 7:29 pm by President Jonathan Harris. Ben Dodge's work on the website was a source of great praise from the Board, especially the ease of use from a Smartphone. There was also a discussion about the difficulty that we have on an annual basis of finding a volunteer to look at the group's financial documents. There were many ideas floated back and forth and Jonathan said that he would provide a written statement, clarifying a possible change to the by-laws. There was also discussion about having an auction for a new, incoming collection since it is so large. It was considered that we do a 65/35 split with the owner this time since there will be so much legwork involved in the cleaning and preparation of the material. Dave Tiktinsky will talk to the owner about having the auction at the owner's house and the 65/35 split of the proceeds.

For the upcoming show, Dave Tiktinsky also mentioned that all the dealers' table fees are paid and that we have one extra table this year as well. The dealers' list and layout will be posted at the show and we need to remind the dealers that we have extended hours until 5:00pm for the concessions stand. Also, the "save the date" e-mail has been sent out and the main postcard for the show will go out the end of February. Another show-related item was that Walter Goetz's wife will still be putting in Walter's case this year, after his sad passing.

Show dealer Tom Cummins of Mobile Mining Experience also has donated all of the Junior door prizes. Thank you, Tom! Chris Luzier will purchase the rest of the door prizes for the show. Joel Rosen and Tom Dushel will purchase the meeting door prizes for the rest of the meetings to carry us through until the next show. Holly McNeil needs help with removing the blue draping material out of the trailer after the machines are unloaded, so we can quickly get all the tables draped for the installation of the cases. We are aiming to get all the cases up and ready by noon this year. Holly also said that we are still in need of volunteers on the Kid's table area until 2:00pm. Jonathan and Chris will help out with the Kid's table area as well, but we really do need more volunteers here on both days. Holly also made a motion to approve \$60.00 for tip money for the three rental company employees that help so much with the delivery and set-up of the tables. The money will be split as \$20.00 for each person and was approved, M/S/P.

For March's regular meeting, we will be welcoming the gold panning group as a demonstration of panning and a speaker program as well. They will also be donating a gold nugget for the door prize, so wear your lucky pants. April's speaker is Jeff Post from the Smithsonian Institution, who will be

Continued on page 5



GLMSMC Board Meeting Minutes for February 20, 2017

Continued from page 4

presenting his annual Tucson Show wrap-up for the group.

Doug Baum also sent out a newly updated membership this morning with a breakdown of all the members. Dave Fryauff discussed the upcoming Rochester Symposium on April 21st and 22nd and the Super Dig and the Franklin, NJ show on the weekend of April 29th. We have also received a donation of about 40 flats of micro material, all collected by Pat Haines. There will be more discussion on what to do with this material at an upcoming meeting. The meeting was adjourned at 9:24 pm.

Respectfully submitted by Chris Luzier

Future Rockhounds of America (The MOCKS) Ages 10-15

Mark Dahlman

Next Meeting Date: March 13

Meeting Time: 7:45-9:00pm

Meeting Location: Sunroom Cafeteria at the Rockville Senior Center

February 13th Meeting:

Congratulations to Jennifer Weiss, who was awarded her Leadership and Collecting badges at the February meeting! At our February meeting, we also talked about different types of meteorites as part of the Earth in Space badge. Jennifer continued to lead FRA members in working on the group exhibit for our club show in March.

March 13th Meeting:

We'll be making craters to finish the Earth in Space badge activities, as well as finishing the group exhibit for our club show. By working on the group exhibit, FRA members can earn their Showmanship badge too. See you at the meeting!

For more information on the Future Rockhounds of America program, please contact Mark Dahlman at <fra_advisor@glmsmc.com> or 301-428-0455.



OUR SHOW—Some Notes and Reminders

Holly McNeil

Thank you to the more than 60 volunteers who have volunteered to work at our show. You are the best.

I will have the complete volunteer assignments at the March meeting for those who wish to confirm when/what you signed up for. Please also feel free to email me (hollybethmcneil@gmail.com) if you would like a reminder.

First Time Volunteers—Special thanks to you.

- You do not pay the admittance charge if you are a volunteer, just tell the admissions staff at the door who you are, sign in with hospitality, and they will hand you a volunteer name badge to wear.
- If you could arrive a couple minutes before your shift to be “trained” if necessary and to smooth the transition, that would be ideal.
- We are in building #6 at the Fairgrounds (there may be a flea market going on in another building at the same time)

Friday Set-up Volunteers

- Remember to bring work gloves if you wish
- We start at 9:00am

Exhibitors

- Cases may be set up after 3:00pm on Friday, take down Sunday at 5:00pm
- If you need tape to secure any part of your exhibit, please only use painters/blue tape (other types mar the case surface)
- Supplies (blue tape/glass cleaner/paper towels, etc.) are supplied and may be found in the white crate in the exhibit area.
- Joel and Holly are the only ones with keys to the new cases

During the Show

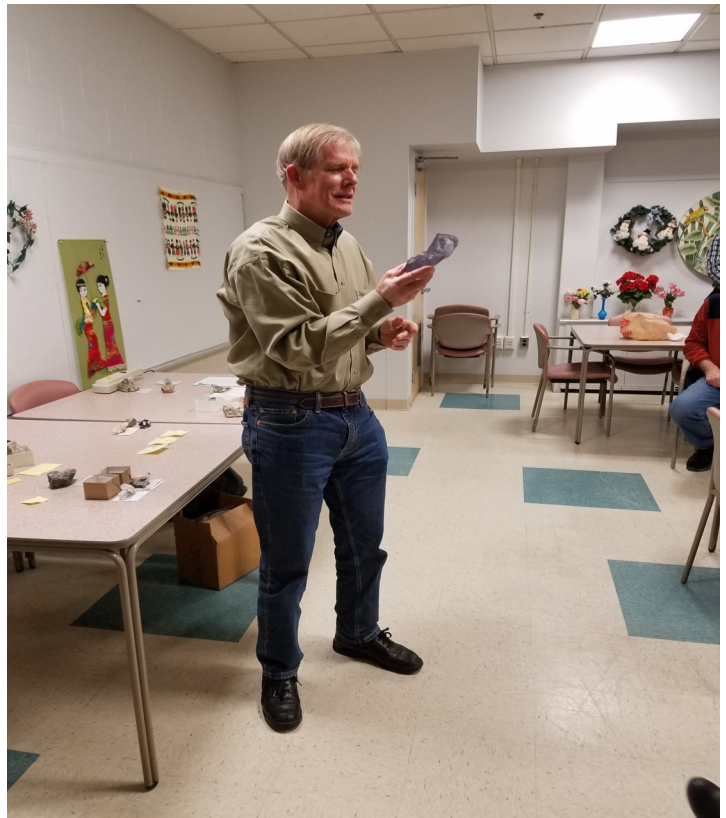
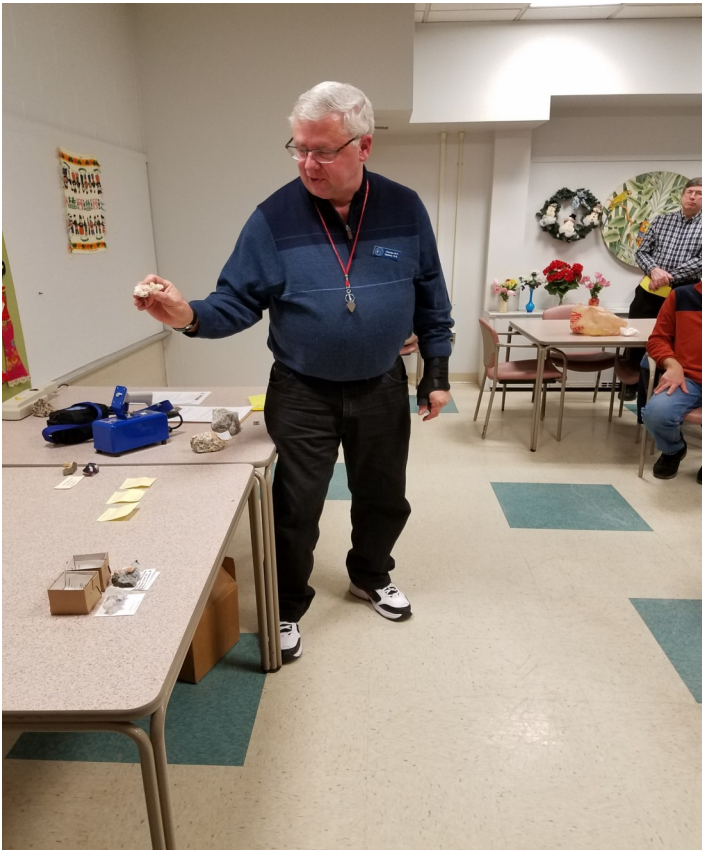
- The Fairgrounds has agreed to extend the hours of the concession stand until 5:00pm both days
- Lost and Found is at the hospitality table

Have a great time!

*Thank you,
Holly*



Pictures from the February 13th Regular Meeting

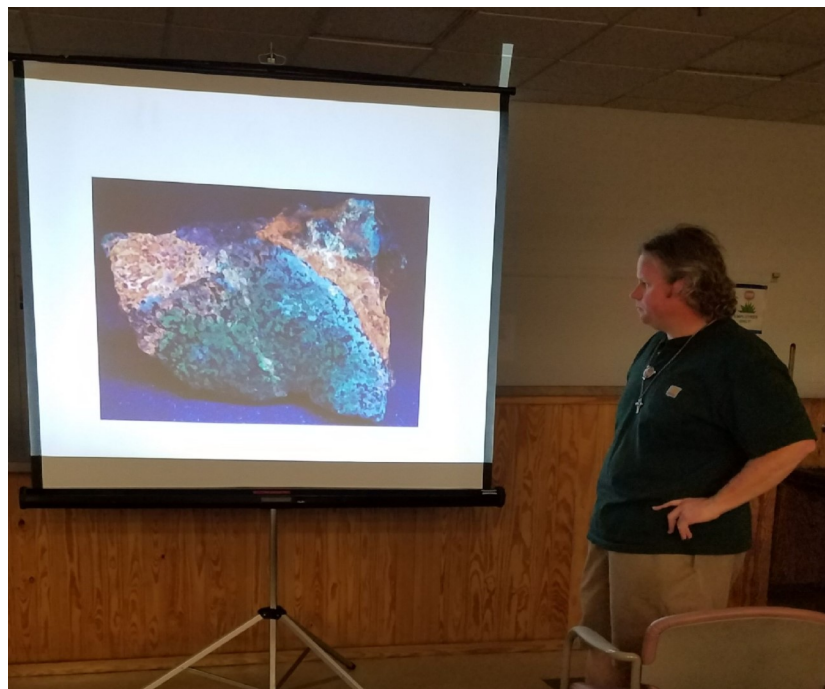




Pictures from the February 13th Regular Meeting



Pictures
courtesy of
Jonathan
Harris





Show Table for February 13, 2017

Please note: ** denotes self-collected

NAME	SPECIMEN	LOCATION
Boe Brosius	Calcite and limestone	Shepherdstown, WV
Jeff Cessna	Sphalerite	Utah
	Fibrous Wollastonite	Franklin Mine, NJ
Holly McNeil	Fluorescent Core	Sterling Hill Mine, NJ
	Tremolite and Tirodite	Gouverneur Talc Corp. Mine, NY
Gary Leaman	Quartz crystals	Mt. Ida, AR
Diane Leaman	Williamsite	Baltimore County, Bare Hills, MD
Frances Becker	Willemite	Sterling Hill Mine, NJ
Mark Dahlman	Fantasy Rock	Ilimaussaq Complex, Greenland
Ken Reynolds	Franklin ore	Franklin Mine, NJ
	Hemimorphite	Sterling Hill Mine, NJ
Jeff Cessna	Willemite, etc.	Puttapa, Australia
Don Greaves	Fluorite	Wise Mine, Westmoreland, NH
Steven Calamuci	Rhodochrosite and Calcite	N'Chwawing, South Africa
	Grandidierite	Madagascar
	Morganite and Tourmaline	Afghanistan
Wendell Mohr	Calcite (Pseudo) after Glauberite	Camp Verde, AZ
Marsha Benshir	Portable lights	Not available
George Durland	Hedyphane	Franklin Mine, NJ
Abigail Cloutier	Sphalerite	Sterling Hill Mine, NJ
	Apophyllite on Prehnite	Fairfax, VA
King Stablein	Phantom Fluorite	Ross Claire, IL
Barbara Burr	Pyrite with Quartz	Bought at show

Continued on page 10



Show Table for February 13, 2017

Continued from page 9

Please note: ** denotes self-collected

NAME	SPECIMEN	LOCATION
Lyle Peterson	Antigorite	Penn-MD Quarry
Leigh Broadhurst	Uranium ore **	Grants, NM
Joel Rosen	Esperite, Willemite, and Calcite	Franklin Mine, NJ
Chuck Hyland	Rhodochrosite w/ Dogtooth Calcite	Charcas, Mexico
Jonathan Harris	Diopside (Short wave blue) **	Timonium, MD
	Apatite, Feldspar **	Ellicott City, MD
Chuck Mason	Apophyllite	Jalgaon, India

General Door Prize:

Orthoceras Fossil Bookends
Won by Marsha Benschir

Show Door Prize:

Picasso Stone (Marble)
Beaver County, Utah
Won by Holly McNeil

Help Wanted: Barter Polishing Skill for a Piece of Opal

Jonathan Harris

A member of our community with many pieces of opal is interested in having a small piece of the opal polished in exchange for giving the polisher the opportunity to pick a piece of the lot. Many show nice opalescence. If interested contact Penny at pensvet2@verizon.net.

Follow us on Facebook at

[https://www.facebook.com/
groups/984241208329511/](https://www.facebook.com/groups/984241208329511/)



Upcoming Events

Jonathan Harris

SuperDig 2017: Saturday, April 29, 2017

This is the annual collecting extravaganza in the Franklin-Ogdensburg, NJ Area. This trip is in conjunction with the Franklin Show in the spring.

Presentation to Boy Scouts on February 16, 2017

Dave Fryauff

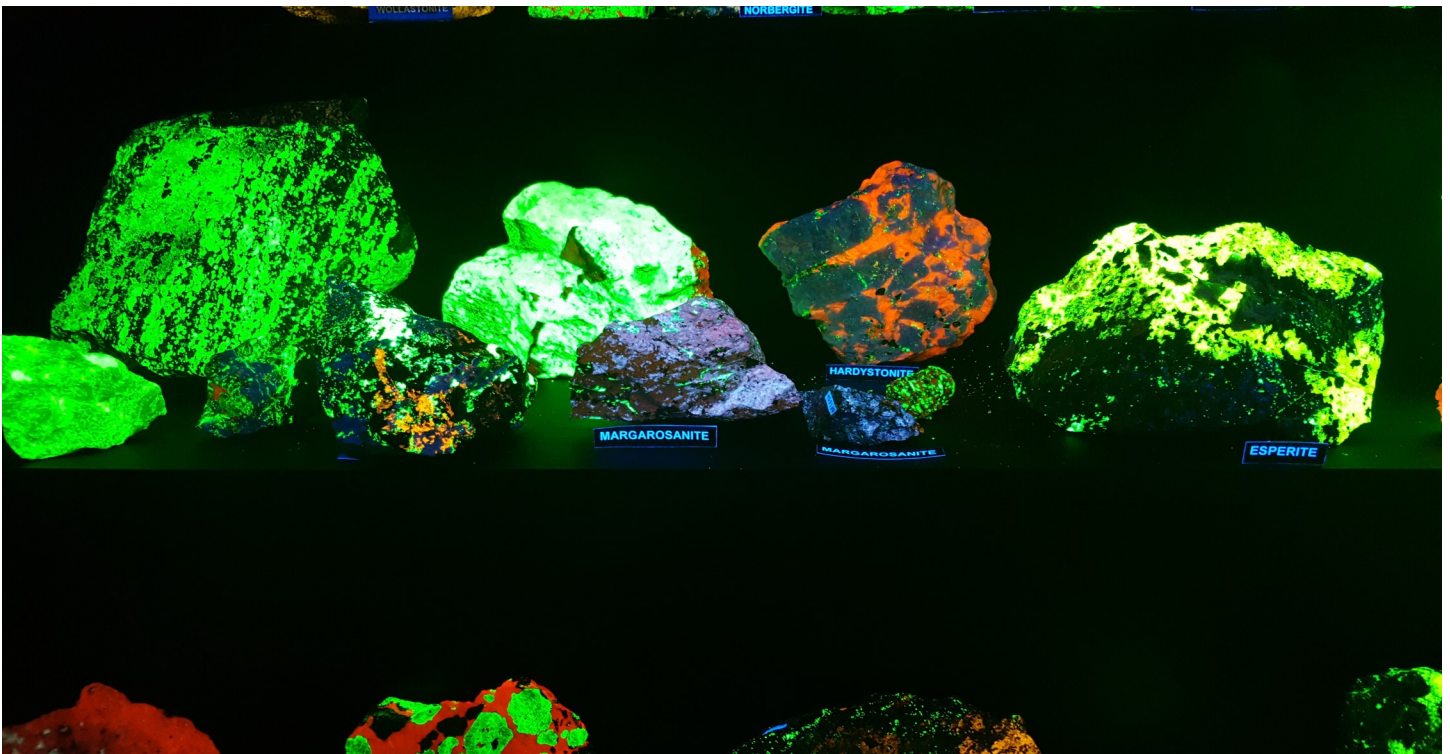
I had a nice time with Clarksburg Cub Scout Pack 1370 last night. I passed out show fliers and managed to do rocks, minerals, fossils, fluorescence, and micros in just 30 minutes.





Pictures from the JMU Mineral Museum January 7, 2017 Trip

Photos courtesy of Dave Fryauff

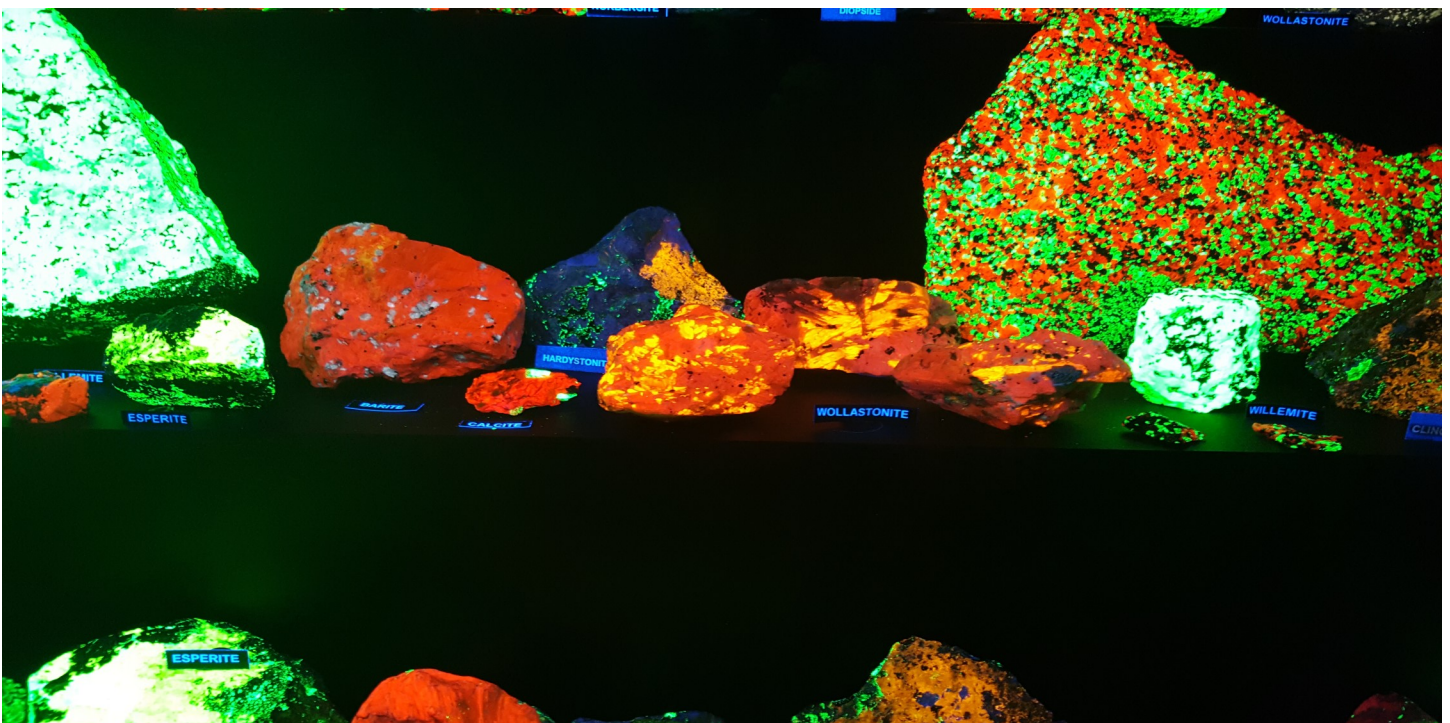
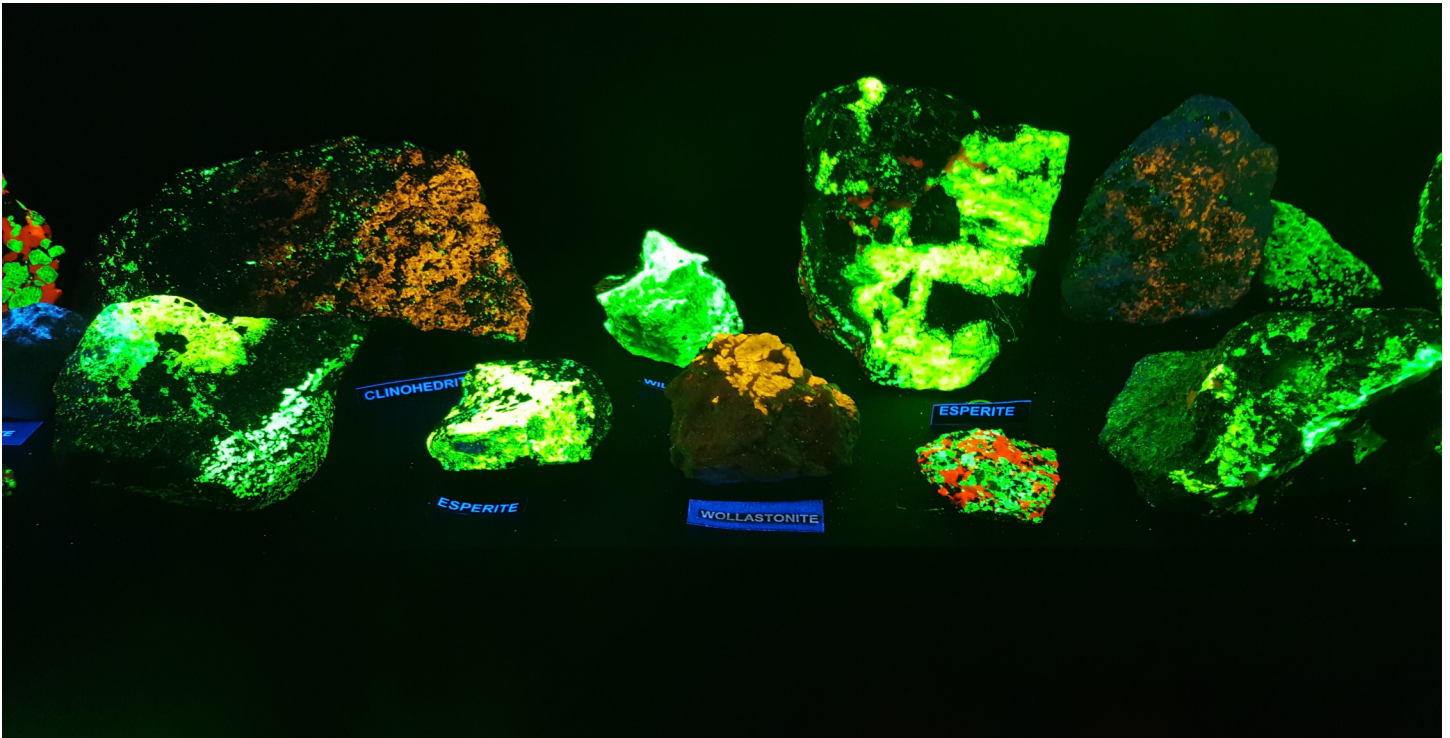


Continued on page 13



Pictures from the JMU Mineral Museum January 7, 2017 Trip

Continued from page 12



Photos courtesy of Dave Fryauff



In the News and on the Web: Selenium Deficiency Promoted by Climate Change—and Other Cool Things About Selenium

Dave Fryauff

<https://www.sciencedaily.com/releases/2017/02/170220190638>.

This news item and new report in Science Today caught my eye. Most of us realize that the element Selenium (Se) is essential to our health and to life on earth. Too much selenium is toxic, but too little can lead to big problems because Selenium is a component of the enzyme glutathione peroxidase, which is required for protein synthesis. This enzyme is found widely in mammals, birds, fish, bacteria, and even algae.

The element Selenium (Se) is the 67th most abundant element in the earth's crust—slightly less abundant than silver (#65), and slightly more abundant than gold (#72). It occurs in nature as Native Selenium, often around the openings of volcanic fumaroles and coal fire vents, and as a component element in 102 different mineral species, most of these as sulfides (containing Sulfur) and sulfates (containing SO_4). You probably will not see any of these Selenium minerals in the great Hall of Minerals at the Smithsonian because they occur as very small crystals that are only visible by microscopy.

You probably have heard of Selenite and have seen it in most mineral collections. Selenite is the name given to the mineral variant of common Gypsum ($\text{CaSO}_4 \cdot 2\text{H}_2\text{O}$) when it is clear and crystalline. The giant crystals of the famous Cave of Giants in Naica, Mexico are all Selenite. Selenite does NOT contain any elemental Selenium; it is given the descriptive Greek word for 'moon stone' because of its pale white and shimmering clear appearance.

In my micromineral collection, I have a tiny specimen of native Selenium from the Homestake Mine, Ambrosia Lake area, Grants Dist., in McKinley Co., New Mexico. I also have Chalcomenite ($\text{CuSeO}_3 \cdot 2\text{H}_2\text{O}$) and Krut'aite (CuSe_2) both from the El Dragon Mine, in Potosi, Bolivia (a very famous mine for a host of rare selenium minerals). From the Socrates Mercury Mine in the Castle Rock Springs area, West Mayacmas District, Sonoma Co., California, I have Tiemannite, a rare mercury selenide. Thanks to New Mexico based GLMSMC member Patrick Haynes, I also have a specimen of Haynesite $(\text{UO}_2)_3(\text{OH})_2(\text{SeO}_3)_2 \cdot 5\text{H}_2\text{O}$ a very rare, bright yellow mineral known only from the Repete Mine in Blanding, San Juan Co., Utah.

<http://pubs.usgs.gov/fs/2002/fs087-02/>

https://en.wikipedia.org/wiki/Selenium_in_biology

<https://www.mindat.org/element/Selenium>



Websites of Interest

Wendell C. Mohr

Lonsdaleite

<[Lonsdaleite is named in honor of Kathleen Lonsdale and is also called a hexagonal diamond in reference to the crystal structure. In nature, it forms when meteorites containing graphite strike the Earth. The great heat and stress of the impact transforms the graphite into diamond, but retains graphite's hexagonal crystal lattice. Lonsdaleite was first identified in 1967 from the Canyon Diablo meteorite, where it occurs as microscopic crystals associated with diamond. Hexagonal diamond has also been synthesized in the laboratory. Its hardness is theoretically up to 58% superior to that of cubic diamond.](https://www.google.com/?gws_rd=ssl#q=+Lonsdaleite+&*></p></div><div data-bbox=)

Current Projects in Paleontology

<Paleocurrents.com>

Maintained by Steve Wagner, a volunteer of the Denver Museum of Nature and Science, and offers a variety of links you will find interesting. Too numerous to enumerate here, so search on your own.

World's Tallest Volcano

<geology.com/records/largest-volcano>

This site leads one to information about Mount Everest (29,035 feet), Ojos del Salado (in the Andes Mountains straddling Chile and Argentina, 22,615 feet), and Mauna Kea (13,796 feet on Hawaii).



Upcoming Shows

**SOUTH PENN
ROCK SWAP & SALE
SPRING SWAP**

MAY 6, 2017

SOUTH MT FAIRGROUNDS
WEST OF ARENDSVILLE,
PA

ON ROUTE 234

FOR GPS USE, ADDRESS
615 NARROWS ROAD,
BIGLERVILLE, PA 17307

ADMISSION \$1

STUDENTS FREE

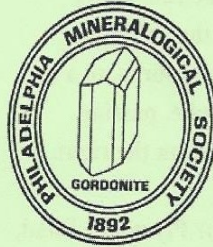
SPONSORED BY CEN PENN &
FRANKLIN CTY

R & M CLUBS

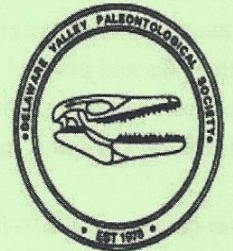
CONTACT:

tsmith1012@comcast.net

MINERAL TREASURES + FOSSIL FAIR



2017 ANNUAL SHOW



The Philadelphia Mineralogical Society and the
Delaware Valley Paleontological Society
present a joint show and sale at the LuLu Temple,
5140 Butler Pike, in Plymouth Meeting, PA.
Just 2 miles from the Norristown exit of the PA Turnpike!

**Saturday, March 25, 10 am to 5 pm
and
Sunday, March 26, 10 am to 4 pm**

Special exhibit by the Academy of Natural Sciences

Fossils, Minerals, Gems, Speakers, and Exhibits!
Learning activities include a Fossil Dig and a Kids' Mineral Corner.
Also – Scouting Merit Badge Information available.
Food and Door Prizes throughout both days.

\$5.00 admission; \$1.00 kids under 12. All uniformed Scouts are free.

Information: www.philamineralsociety.org



Upcoming Shows



Rocks4Kids Jr Education Day

Saturday March 11, 2017

From 10 AM to 3PM

Linglestown Life United Methodist Church

1430 North Mountain Road, Linglestown, PA

Sponsored by the Central Pennsylvania Rock and Mineral Club

www.rockandmineral.org

Experiment, play games, learn interesting facts about rocks, gems and minerals, purchase samples, observe demonstrations, and learn about the mineral rich world we live in!

Participation is limited and therefore on a first come first serve basis. Please sign up early!

Advanced payment of \$5 per participating child will reserve their spot for this special event.

To register:

Go to the website: www.rockandmineral.org

or

Send name(s) and remittance (check or money order) to:

Central PA Rock and Mineral Club

Jr. Education Day Event

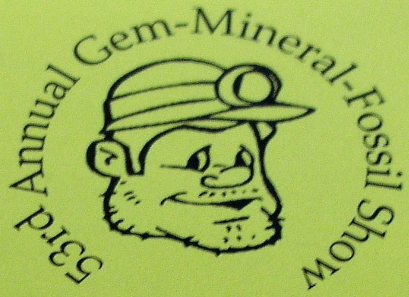
PO Box 6271

Harrisburg, PA 17112-0271



Upcoming Shows

Adult Admission \$6 each
 Group with this Ad. All \$5 each
 11 and under Free!



Montgomery County
 Fairgrounds
 GPS: 39°8'44"N
 77°12'22"W
 Building 6
 16 Chestnut Street
 Gaithersburg
 Maryland

March 18-19, 2017
 Sat. 10 am-6 pm
 Sun. 11 am-5 pm

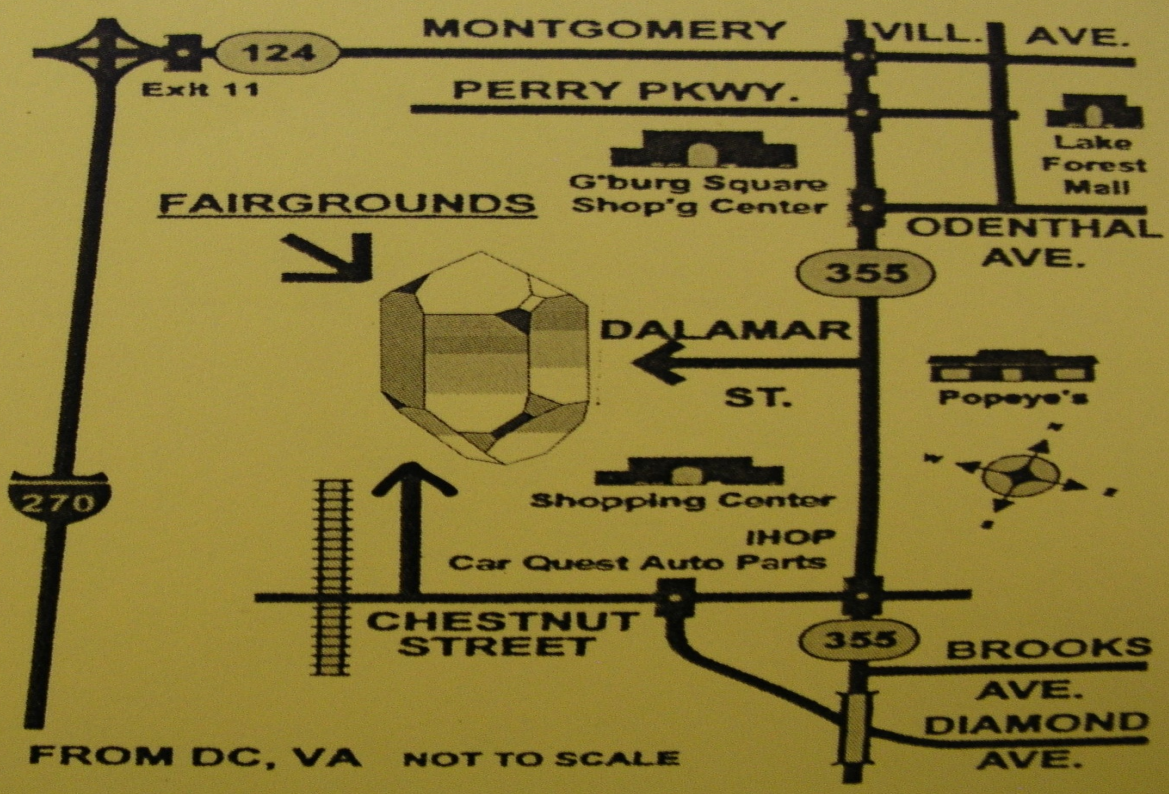
The Gem, Lapidary, and Mineral Society of Montgomery County, MD.

- | | | |
|----------------------|------------------------------|------------------|
| Featuring: | | |
| Door prizes | Free specimens for the kids! | Over 40 exhibits |
| Demonstrations | DIY cabachon making | Raffle |
| Fluorescent minerals | Free kid's mini mine | |

- More than 20 dealers from around the country featuring:
- | | | |
|---------------|------------------|------------|
| Fossils | Jewelry | Beads |
| Minerals | Fluorescents | Meteorites |
| New age items | Gems & gem rough | And more |

© 2017

www.glmismc.com



FROM DC, VA NOT TO SCALE



Upcoming Shows

The Chesapeake Gem & Mineral Society Auction

Date: Friday, March 10, 2017

Time: 7:30 pm (viewing at 7:00 pm)

Place: Westchester Community Center

2414 Westchester Ave., Oella, MD 21043

Items that can be found are Gemstones, Cutting rough, Jewelry, Minerals, Fossils, Books, Magazines, and Lapidary equipment.

Refreshments are available.

Directions

From the north:

Take I-695 to US 40 west (exit 15B). Turn left on N. Rolling Rd. Turn right at Old Fredrick Rd. (You will pass through 1 roundabout). Turn right on Oella Ave. Turn left on Westchester Ave. Westchester Community Center is on the right.

From the south:

Take I-695 to Fredrick Rd. (exit 13). Turn left on Fredrick Rd. Follow Fredrick Rd. approx. 2.7 miles. Turn right on Oella Ave. Turn left on Westchester Ave. Westchester Community Center is on the right.

Need a map? You can find one on our web site.

<chesapeakegemandmineral.org>

If you are planning a trip and want to know what clubs you might be able to visit, it would be worthwhile to visit the American Federation of Mineralogical Societies website. Check out their newsletter archives at <http://www.amfed.org/news/default.htm>.





BOARD OF DIRECTORS

President – Jonathan Harris, 11932 Goya Drive, Potomac, MD 20854-3313, (301-545- 0808)

Vice President – Gary Leaman, 7524 Cinnabar Terrace, Gaithersburg, MD 20879-4577,
(301-963-3702)

Secretary – Jeff Cessna, 12116 Cliftdale Drive, Silver Spring, MD 20904-1941, (301-680-7963)

Treasurer – Tom Dushel, 108 Berrywood Drive, Severna Park MD 21146-2004, (443-514-6734)

Field Trip Chairman – Dave Fryauff, 24109 Sugar Cane Lane, Laytonsville MD 20882-4031,
(301-253-1687)

Membership Chairman – Doug Baum, 11205 Golden Meadow Ct., Germantown, MD 20876-1740,
(301-515-4641)

Downstairs Showchair – Holly McNeil, 22 South Duke Street, Rockville, MD, 20850-1014,
(301-605-7179)

Upstairs Showchair – Dave Tiktinsky, 9209 Laurel Oak Drive, Bethesda, MD 20817-1937,
(301-365-2812)

Property Manager – Joel Rosen, 833 Rampart Way, Union Bridge, MD 21791-9325, (410-775-7937)

Immediate Past President – Chris Luzier, 847 Springdale Drive, Millersville, MD, 21108-1436,
(443-995-5363)

EFMLS Liaison – Wendell Mohr, 9509 Emory Grove Road, Gaithersburg, MD 20877-3501,
(301-926-7190)

Bulletin Editor– Olivia Luzier, 847 Springdale Drive, Millersville, MD 21108-1436
(editor@glmsmc.com)

Life Members: Larry Harrison, Wendell Mohr, Juan Proaño, and George Durland

Society Address: Gem, Lapidary, and Mineral Society of Montgomery County MD., Inc.

P. O. Box 444, Gaithersburg MD 20884-0444

Website: <http://www.glmsmc.com/>

All Society correspondence is to be sent to this address except that which is intended for The Rockhounder and its editor. Such items are to be sent to the editor's email address at editor@glmsmc.com.

Permission to copy material printed herein, except specifically copyrighted items, is granted, provided credit is given.

Award Winning Bulletin
EFMLS, AFMS



**TIME SENSITIVE
DATED MATERIAL
FIRST CLASS MAIL**

**The Rockhounder
Gem, Lapidary, and Mineral Society
of Montgomery County, MD, Inc.
P. O. Box 444, Gaithersburg MD
20884-0444**